

Gerald P. Hodge

(1920-2012)

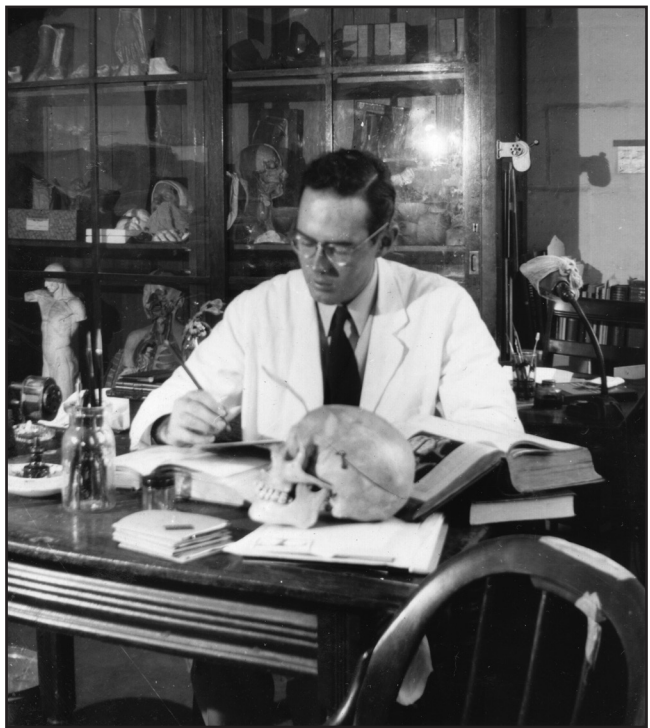


GERALD P. “JERRY” HODGE, MEDICAL ILLUSTRATOR AND EDUCATOR, passed away on June 7, 2012.

As a young man, Jerry studied at the University of Colorado, where he earned a fine arts degree. He then served in the Army in World War II, and participated in the invasion of Okinawa. After his military service, he studied under Ranice Crosby at John Hopkins, and received a certification of medical illustration in 1949.

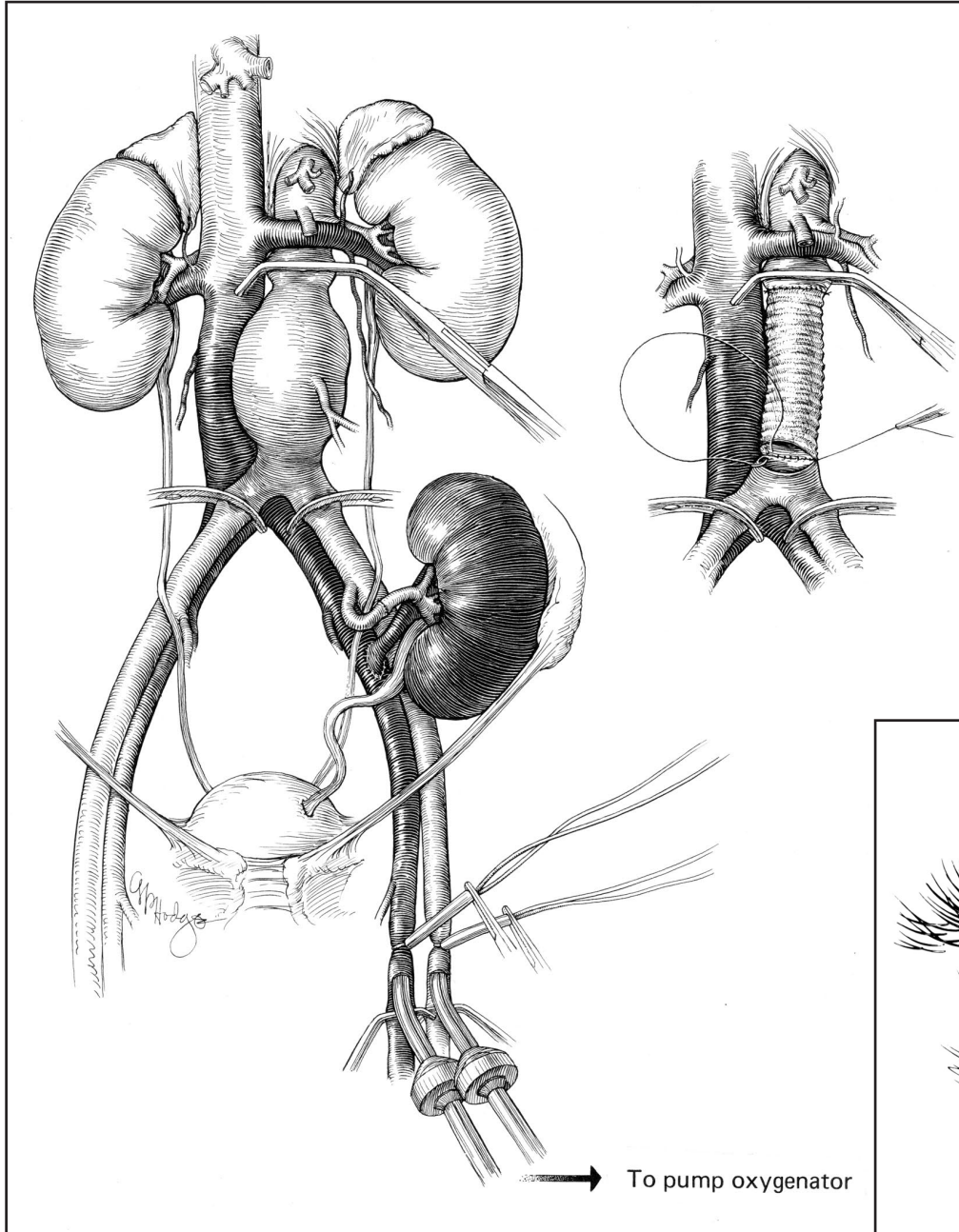


Jerry in his army uniform, mid-1940s.



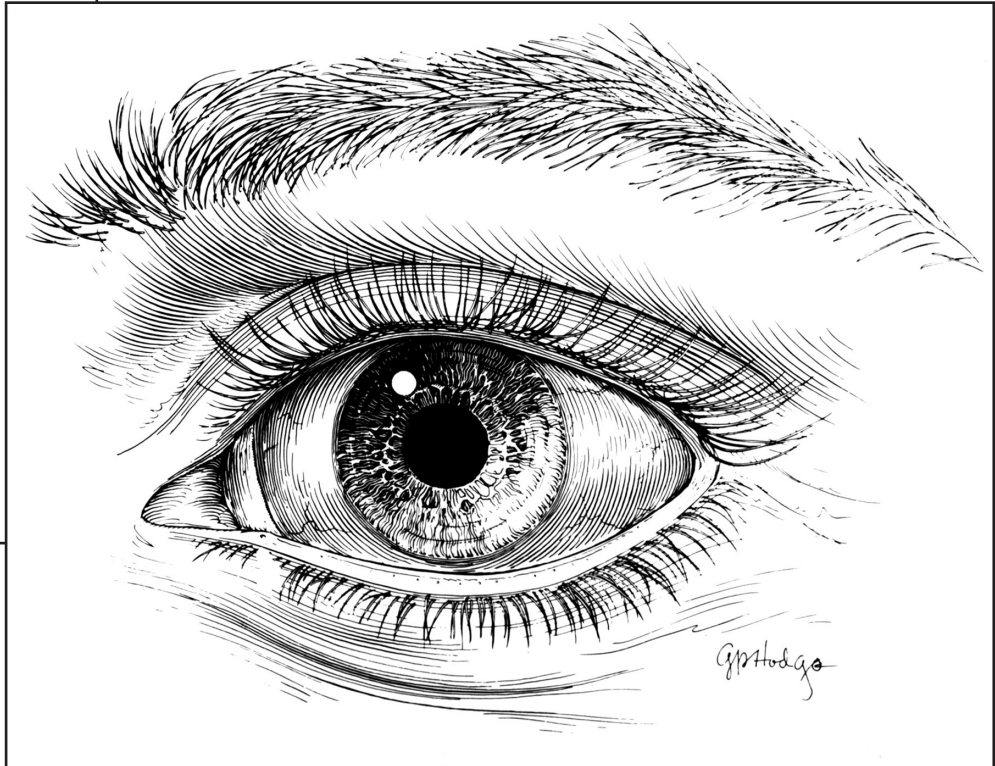
Jerry as a student at Johns Hopkins.

Jerry began his career as a medical illustrator at the Sugarbaker Cancer Clinic in Missouri. He then became Professor and Director of the medical illustration department at Louisiana State University. In 1955, he joined the University of Michigan, where he later established a graduate program in medical and biological illustration in 1964. He remained there until his retirement.



Examples of Jerry’s accomplished “eyelashing” technique.

Jerry touched the lives of many, as a consummate artist, teacher, and mentor. As an artist, he continuously experimented with technique, mingling techniques perfectly. He is particularly well known for his pen and ink “eyelashing” technique, produced with a flexible pen nib that allows for thick and thin lines which Jerry described as a “deceptively simple technique.” He commented, “Poor draftsmanship is difficult to hide. The challenges of creating a superb illustration that reproduces well make it one of my favorite media.”



Jerry received many awards through the years, including several Russell Drake Awards, Ralph Sweet Awards, Muriel McLatchie Miller Fine Art Awards, the Max Brödel Award for Excellence in Education, the Distinguished Faculty Achievement Award from the University of Michigan, the Association of Medical Illustrators Lifetime Achievement Award, and numerous other professional recognitions.

In his retirement, Jerry taught many workshops and became one of seven members of the Trompe l’Oeil Society of Artists. Of his trompe l’oeil work, Jerry wrote:

“ Teaching in the scientific art field at the University of Michigan required me to be versatile in many scientific art techniques such as gouache, alkyd, acrylic, colored pencil, carbon dust, silver point, and pen and ink, and most of these techniques I use in my current trompe l’oeil paintings. My paintings are carefully designed, and I try and go beyond photographic appearances by adding contrast, adding to or eliminating details, making shadows more important, and by slightly changing the shapes and colors of my subject matter in order to enhance the design and quality of my paintings. ”



Pleasures and Treasures, oil on panel.



Peppers and Mayfly, oil on panel.

Jerry was kind, generous with his knowledge, and always had a sparkle of humor in his eye. He encouraged and inspired his students to aspire to create work that communicated information effectively and beautifully. Jerry’s illustrations show a confident hand, masterful detail, and a strong aesthetic sense.

He was respected and admired, and will be greatly missed.

Text written by Karen Ackoff

“ Jerry was one of the greats and a true gentleman. His excellence as an artist is obvious, but his legacy is also demonstrated by the many Michigan graduates who continue his mission. He will be missed dearly, but his work and the lives he touched will live on. ”
–Scott Barrows



Jerry giving a demonstration at a Guild of Natural Science Illustrators Meeting, 2006.



Jerry Hodge (left), with Robert Demarest (middle) and John Cody (right), at the Art As Applied to Medicine Centennial Celebration, The Johns Hopkins University, 2011.



Untitled, gouache and collage, 2012. Jerry’s last known piece.